

A Neighbourhood Plan for Maidenhead

“Find out more”

Tuesday 7th June 2022

M a i d e n h e a d N e i g h b o u r h o o d F o r u m

Welcome & introduction

- Any housekeeping
- Aim of meeting – mobilise, inform

Welcome and Introduction

Andrew Ingram, co-Chair, MNF (5 mins)

A Neighbourhood Plan for Maidenhead

Ian Rose, co-Chair, MNF (20 mins)

The Windsor Neighbourhood Plan

Claire Milne, Alison Logan and Susy Shearer, WNP (20 mins)

Questions and answers

(15 mins ...)

Maidenhead's "democratic deficit"

Central Government

Local Government - RBWM

Parish Council

?



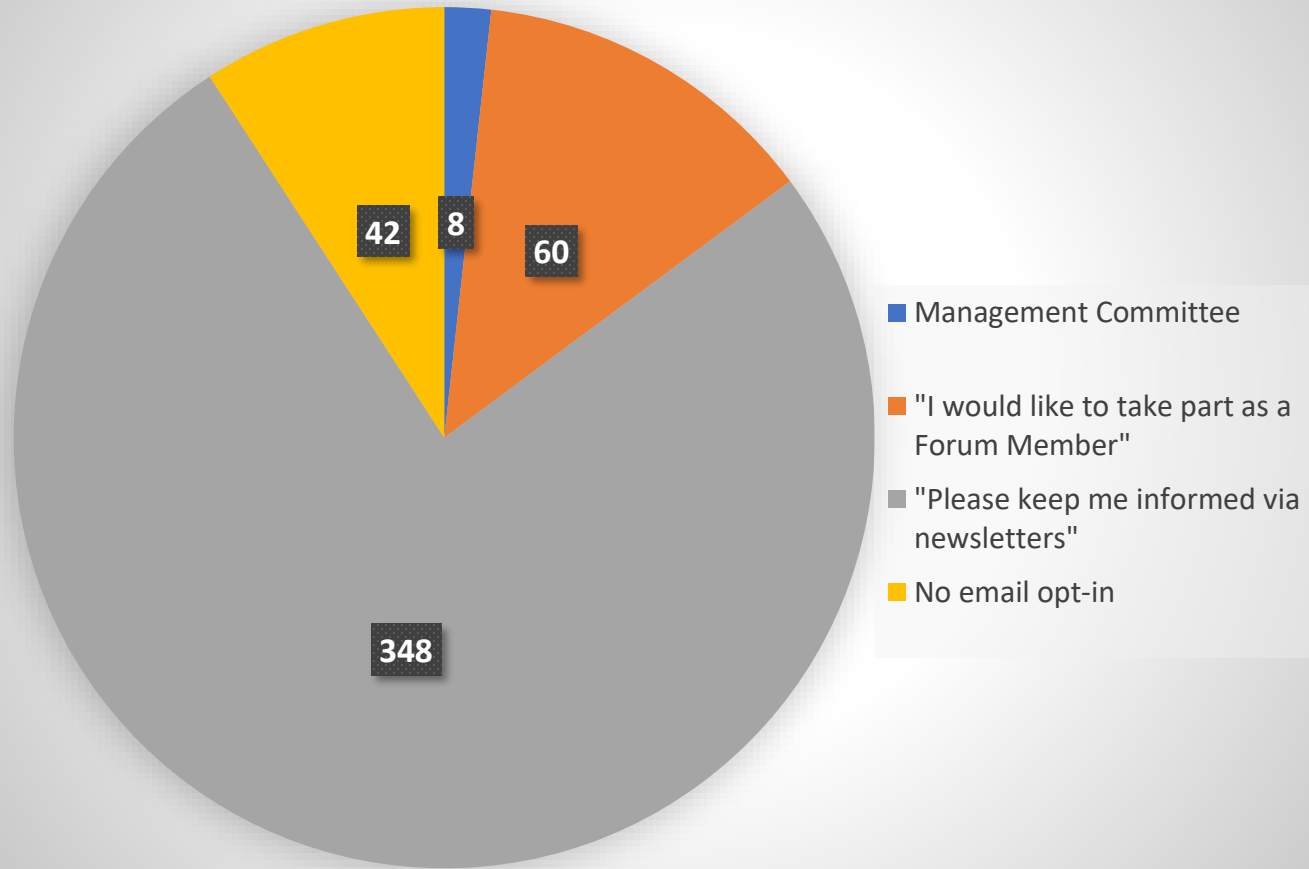
e.g. Bray Residents



Maidenhead Residents

Who are we?

MNF email database (total 458)



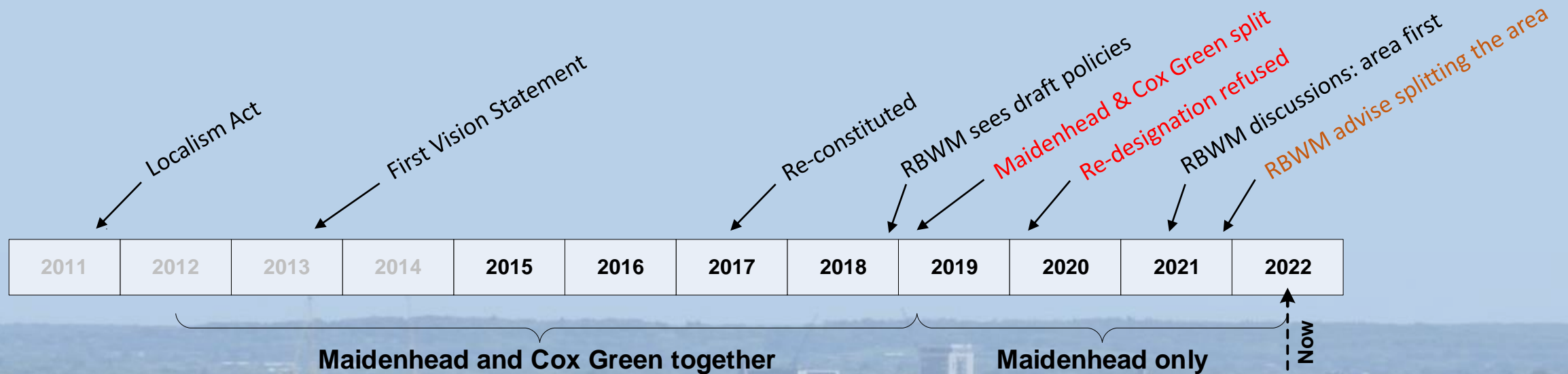
+ 800 Facebook Followers

Written constitution

But formally we are nobody until designated as a qualifying body

How did we get to here?

- Originally designated as Maidenhead together with Cox Green
- A 2019 change at National level invalidated this way of doing it



- Subsequent re-designation of the area and the body refused in Feb 2020
 - We are now in constructive dialogue with RBWM before re-applying for designation

Keeping things going remotely

Date	Topic		Seen by	Clicks, reactions
27/02/2021 11:34	 Nicholson Centre: proposals recommended for		 7.5K 	2.3K 143 
29/01/2021 16:47	 RBWM have launched a public consultation around		 3.3K 	297 32 
27/01/2021 10:46	 A new apartment block has been proposed behind the		 9K 	1.6K 185 
14/01/2021 12:28	 When we ask people about their views on local building		 7.1K 	1.4K 50 
09/12/2020 17:20	 Deadline for responses to RBWM about Areli's plans		 4.6K 	288 45 
03/12/2020 18:51	 For anyone who missed it - Areli have posted a		 3.3K 	131 19 
02/12/2020 11:09	 £500m Nicholson Centre proposals: what did you		 6.1K 	1.2K 95 
27/11/2020 19:36	 The developers behind the planned new Nicholson		 4.3K 	725 62 
20/11/2020 19:38	 NICHOLSON'S PROPOSALS - UPDATE		 2.5K 	887 57 
28/10/2020 19:21	 If you missed the online events with the developers,		 236 	18 1 
27/09/2020 19:42	 The government is consulting on really big		 2.7K 	262 8 
03/08/2020 16:25	 Here is the Forum's draft response to the Inspector for		 1.6K 	272 12 

“What about the infrastructure?”

MNF SUMMARY SHEET 1: EDUCATION

#1

With the population of Maidenhead set to rise by around 40% (?) over the next ten years, people often ask about the plans for new infrastructure to support this growth – schools, surgeries, roads etc. The plans are to be found in RBWM’s Infrastructure Delivery Plan but it’s a lengthy and complex document, so the Forum has created this series of short summaries to help residents understand what is planned.

This first sheet summarises the plans in education.

Infrastructure investment is general funded by a combination of government grants, developer contributions and borrowing by RBWM.

Importantly, the 2019 Infrastructure Delivery Plan is a “living document” which is continually updated, with new projects, new cost estimates and new proposed timings.

The full RBWM Planning document can be found at:
<https://www.rbwm.gov.uk/home/planning/planning-policy/evidence-base-and-monitoring/evidence-base>

MNF SUMMARY SHEET 1: EDUCATION

	Purpose	Delivery Partner	Est. Cost	Period
at Chiltern	Support BLP growth	tba		6-12Yrs
at AL13:	Support BLP growth	tba	£40.392m	6-12Yrs
at site	Support BLP growth	tba		6-12Yrs
Primary	Support BLP growth	tba	£45.662m	6-12Yrs
at AL13:	Support BLP growth	tba	£35.100m	6-12Yrs
sc.)	Support BLP growth	tba	£18.044m	6-12Yrs
Bridge at	Free School supporting autism	Education Funding Agency to fund	-	1-5Yrs
)	Growth in SEN needs	Education Funding Agency	£30.00m	Medium
ol	Support BLP growth	tba	£1.832m	1-17Yrs

(where costed) - £171m
- Delivery Plan (DDP) (2019)

hood Forum is an independent group of residents, kers formed mid-2019 to develop - as volunteers - for Maidenhead. More details at www.mnf.org.uk

Maidenhead Neighbourhood Forum

Maidenhead Neighbourhood Forum

“What about the infrastructure?”

MNF SUMMARY SHEET 2: TRANSPORT

#2

With the population of Maidenhead set to rise by around 40% over the next ten years, people often ask about the plans for new infrastructure to support this growth – schools, surgeries, roads etc. The plans are to be found in RBWM’s Infrastructure Delivery Plan but it’s a lengthy and complex document, so the Forum has created this series of short summaries to help residents understand what is planned.

This second sheet summarises the plans for transport.

Infrastructure investment is general funded by a combination of government grants, developer contributions and borrowing by RBWM.

Importantly, the 2019 Infrastructure Delivery Plan is a “living document” which is continually updated, with new projects, new cost estimates and new proposed timings.

The full RBWM Planning document can be found at:
<https://www.rbwm.gov.uk/home/planning/planning-policy/evidence-base-and-monitoring/evidence-base>

MNF SUMMARY SHEET 2: TRANSPORT

Purpose	Delivery Partner	Est. Cost	Period
crease capacity/ port growth	Highways England	£586 - 862m	1-5Yrs
rrail	Crossrail	n/a	1-5Yrs
rease speed and uency	GWK and Local Enterprise Partnership	n/a	tba
port BLP	Highways England	£3.0m	Medium Term
th	Highways England	£0.96m	Medium Term
ort BLP	Highways England	£0.35m	Medium Term
th		Not in program	Medium Term
ort BLP		£0.47m	Medium Term
rt BLP		£0.06m	Medium Term
t BLP		£0.4m	Medium Term
t BLP		£0.35m	Medium Term
t BLP		£0.95m	Medium Term
BLP		£0.25	Medium Term
BLP		£0.5m	Medium Term

g Highways England projects - £7.3m +tba
projects - £590-866m

Forum is an independent group of residents, formed mid-2019 to develop - as volunteers - Maidenhead. More details at www.mnf.org.uk

Maidenhead Neighbourhood Forum

Maidenhead Neighbourhood Forum

Our following continues to grow, nevertheless



Welcome and Introduction

Andrew Ingram, co-Chair, MNF (5 mins)

A Neighbourhood Plan for Maidenhead

Ian Rose, co-Chair, MNF (20 mins)

The Windsor Neighbourhood Plan

Claire Milne and Susy Shearer, WNP (20 mins)

Questions and answers

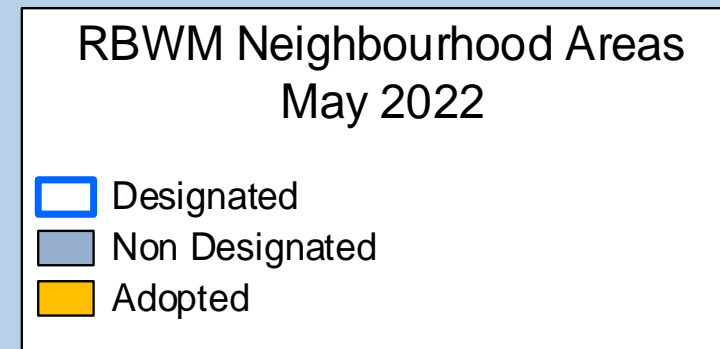
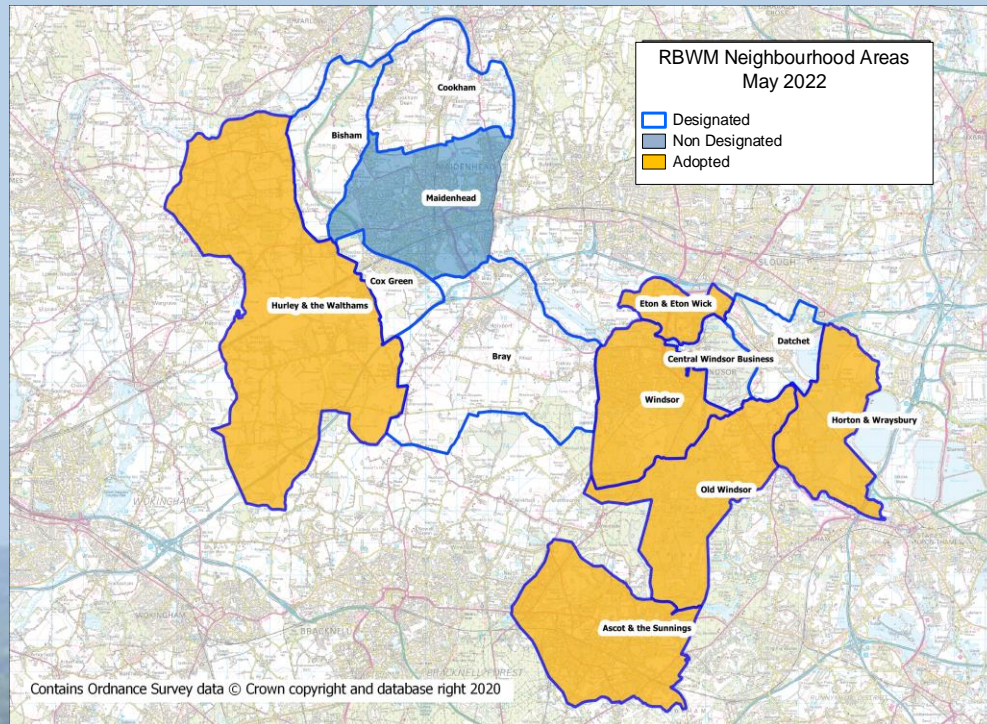
(15 mins ...)

What is a Neighbourhood Plan?

- A neighbourhood plan puts in place planning policy for a neighbourhood area to guide future development
- It is about the use and development of land
- It may deal with a wide range of issues (such as housing, employment, design, heritage and transport) or it may focus on one or two issues only
- It contributes to the achievement of sustainable development

What is a Neighbourhood Plan?

- Most areas of RBWM are doing Neighbourhood Plans



**Designated = Working on a plan,
no policy weight yet**

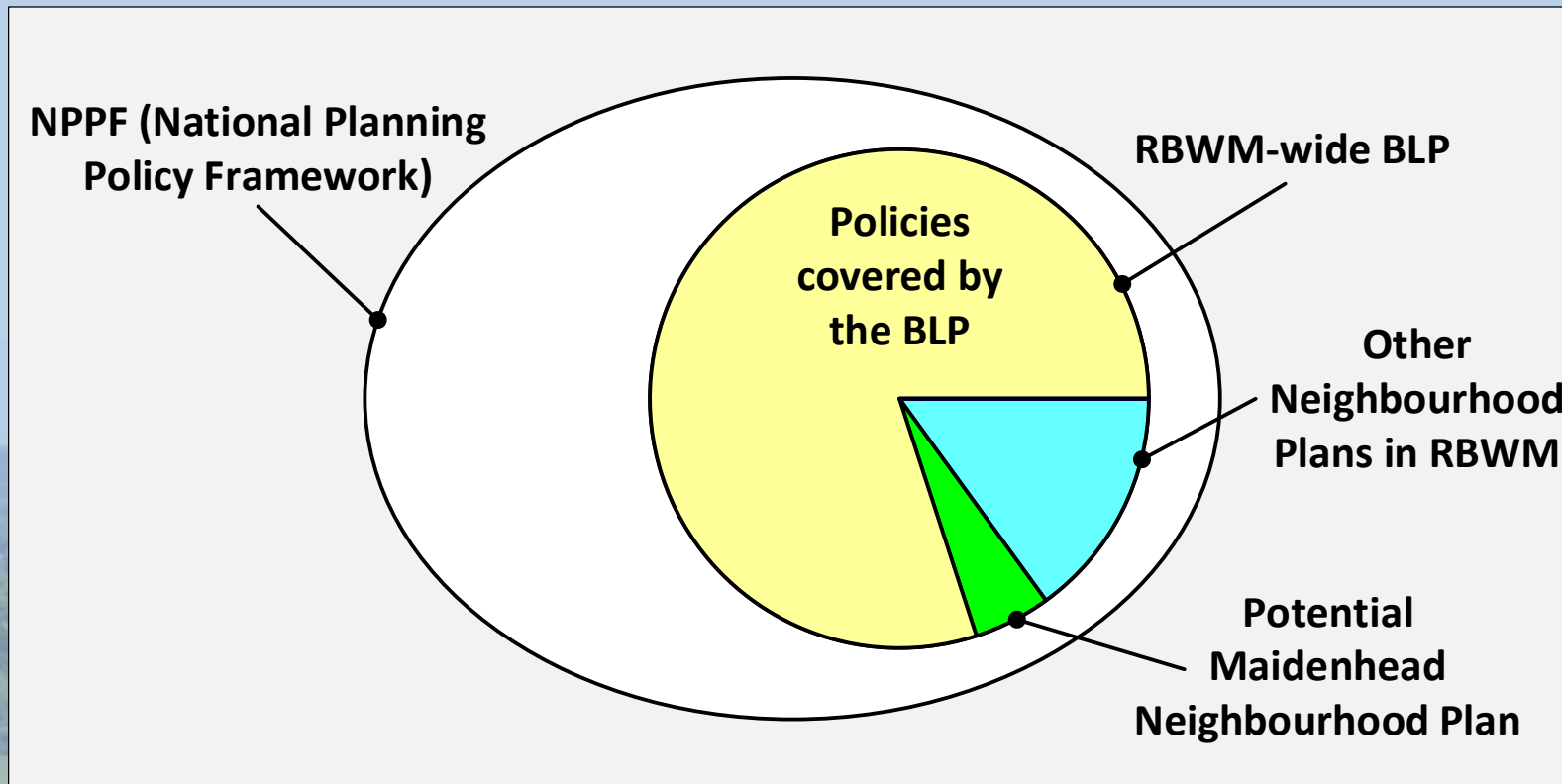
**Non-designated = No area or
group recognised for plan-making**

**Adopted = Plan agreed and part of
planning policy**

- There's a lot happening in Maidenhead, now and in future

Where does an NP fit with the BLP?

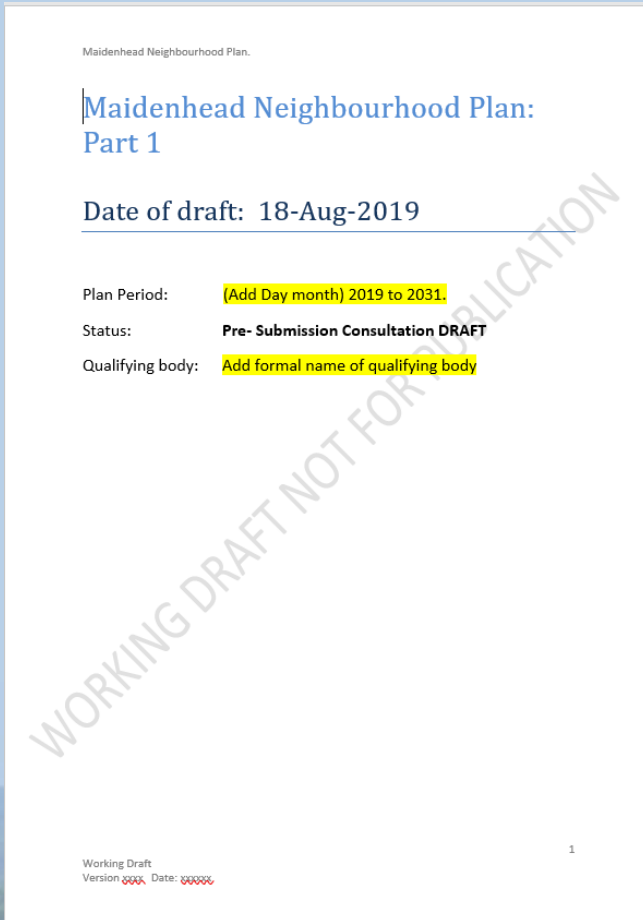
- Everything has to be compliant with the NPPF (National Policy)
- A Neighbourhood Plan has to align with the RBWM BLP



Neighbourhood Plan Deliverables

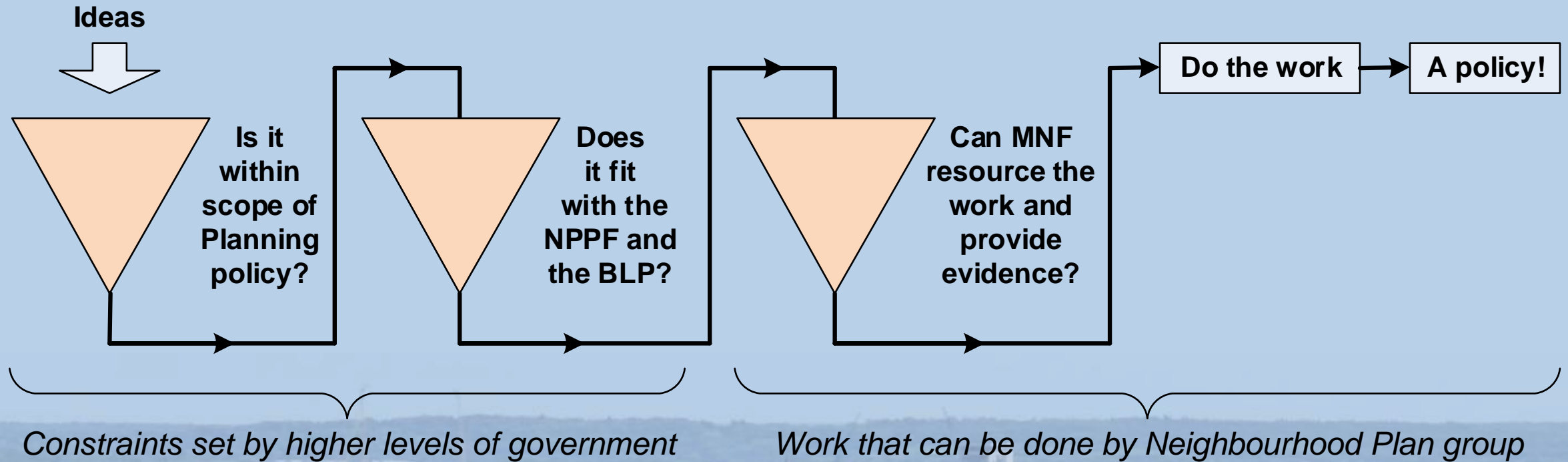
- 1) Planning policies about future development
 - This means: policies used to decide whether planning applications are approved
 - Neighbourhood Plans can propose areas for development – but BLP does this
 - Most likely, we will be making policies to guide developments
- 2) Developers look at policy before making planning applications
 - Once a Neighbourhood Plan is “made”, it will affect what is proposed
- 3) A Neighbourhood Plan group is not..
 - A talking shop, a complaints procedure, a way of challenging higher level policy, a way of making specific projects happen, a way to stop development..

Five myths about Neighbourhood plans



- **They can reduce building heights**
 - *Any text comment/explanation?*
 - *May be room for a policy outside the town centre?*
- **It could save the Golf Course**
- **They can cut traffic**
- **It can make housing affordable**
 - *Mark Fessey may not share this view?*
- **It can challenge the Borough Local Plan**
 - ******
- *Maybe add "You can plan your own neighbourhood"?*

Ideas, policies and filtering



Policy topics and scope

Maidenhead Neighbourhood Plan.

**Maidenhead Neighbourhood Plan:
Part 1**

Date of draft: 18-Aug-2019

Plan Period: (Add Day month) 2019 to 2031.

Status: Pre-Submission Consultation DRAFT

Qualifying body: Add formal name of qualifying body

WORKING DRAFT NOT FOR PUBLICATION

Working Draft
Version 0000 Date: 000000

1

- We had a draft Neighbourhood plan, but..
 - Last updated in Aug 2019
 - Contained policies on for example Green Spaces, Built Heritage, Green Corridors..
 - Was aligned to a now-outdated version of the BLP
- Policies should come from the membership
 - Scope and policies need to be re-assessed
 - Re-run ideas and filtering process if re-designated
- Policies will only come to fruition if people do the work
 - Public engagement, evidence base, alignment with BLP..

Some candidate policy topics..

Topic	Comments
> Local Green Spaces	Then-candidate list and policy was in 2019 draft Neighbourhood Plan
> Built Heritage	BLP policy is very broad and open to interpretation
> Green Corridors	Policy was in 2019 draft Neighbourhood Plan
> Transport links	Cycling and walking routes policy was in 2019 draft Neighbourhood Plan
> Design Codes	RBWM has Borough-wide design guide. Opinions vary on “good” design..
> Development of the suburbs	Central government uses the term “gentle densification”..
> Housing Mix and type	BLP policy seems weak
> Waterway corridor	Balance of recreation, wildlife and landscaping
> Biodiversity	BLP contains policy
> Ring Road barrier	Policy to make it more permeable to sustainable transport modes?
..other ideas, needs and candidates will arise!	

What Neighbourhood Plans can do

- We've identified some candidate policy topics for Maidenhead
 - Gathering and filtering ideas is a key post-designation activity
 - We need an active and engaged group of people
 - ..and to pass the RBWM criteria for forum membership
 - ..and to agree the area with RBWM!

Welcome and Introduction

Andrew Ingram, co-Chair, MNF (5 mins)

A Neighbourhood Plan for Maidenhead

Ian Rose, co-Chair, MNF (20 mins)

The Windsor Neighbourhood Plan

Claire Milne and Susy Shearer, WNP (20 mins)

Questions and answers

(15 mins ...)

Some learnings from Windsor NP





M a i d e n h e a d N e i g h b o u r h o o d F o r u m